

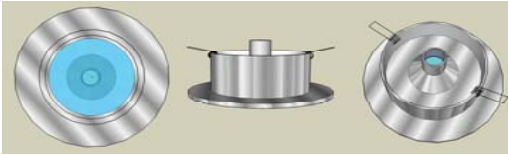
### Downlight Kit CWD6B Contents

- Fibre Optic Harness with 6 tails – 1@1.5m, 1@2m, 1@2.5m, 1@3m, 1@3.5m and 1@4m.
- 6 x Black, White or Stainless Steel Eyeball or Bracket Fittings
- 100w Tungsten Halogen Lightsource with Colourwheel

### Electrical Requirements

The lightsource requires 2 x 240v electrical supplies, one for the lamp and one to power the colour wheel.

This allows for the lights to be either on constant colour change or to be stopped on one colour.



### Tools Required for Cutout

For the Eyeball Fittings:

- Hand Drill
- 40mm Hole Saw

No cutout is required for the bracket fittings.

### Prior to Installation

Decide on the location for the lightsource.

This should be in a watertight and ventilated area and should be in such a place that the fibre optic tails will easily reach the desired positions for the fittings.

Also, remember that the lightsource requires 2 x 240v electrical supplies and that access will be required for periodic replacement of the lamp (after approx. 3000 hours).

### Safety Information

Our fibre optic lighting kits emit no heat or U.V. The end fittings are completely cold and have no electricity running through them, making them safe to touch and perfect for wet or humid locations where conventional lighting would be dangerous. Please be aware though, that the lightsource may become hot and should be kept out of reach of children.

The lightsource is not waterproof and must be installed in a watertight location.

### Installation

- Decide on the six locations for the eyeball fittings and using a hole saw, drill 40mm holes in these locations.
- Feed one tail from the lightsource through each of the 6 holes in the ceiling
- Screw an eyeball fitting onto the end of each tail. The further on you wind the fitting, the wider the spread of light. The more you unwind the fitting, the more focused the light becomes.
- Once happy with the beam width, pull back the springs on the fitting and insert it into its hole until the flange is flat on the ceiling.
- Arrange for the two electrical feeds to the lightsource to be linked back to two remote switches in a convenient location to control the operation of the lightsource and the motor for the colourwheel.

